

ABRA[®] Abdominal

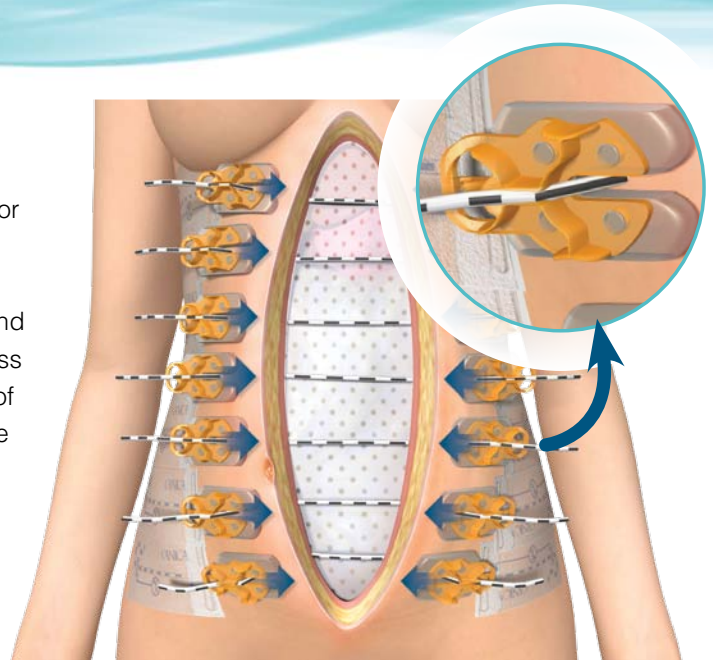
A primary closure provides a better outcome

Open Abdominal Wounds

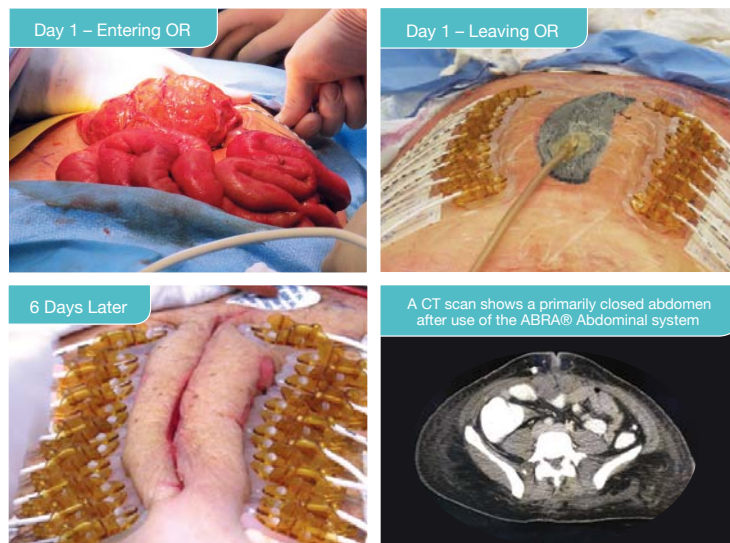
ABRA Abdominal allows for the option of primary closure for retracted, mid-line abdominal defects.

Installation of the ABRA System pulls muscle planes and skin together from their lateral retracted state with relentless dynamic appositional traction, leaving the leading edge of the wound margins undisturbed when performing definitive primary closure.

An abdominal wound closure restores normal physiology, which in certain cases has been shown to reduce length of stay, short-term morbidity risks, and future healthcare costs.²



Results at a Glance*



* This case contains the opinions of and personal techniques practiced by the treating physician. The techniques presented herein are for informational purposes only. The decision of which techniques to use in a particular clinical application lies with the physician based on patient profile, particular circumstances surrounding the procedure, and previous clinical experiences. * Can be purchased separately

Product	Code/Quantity
ABRA Abdominal Wall Closure Set	CWK08
PACK { 50 cm Silicone Elastomer (1/pack) Button Anchors (2/pack) Button Tails (2/pack)	10 packs/set
SurgiFish	1/set
13-hole Elastomer Retainer	1/set
Cannulator (SWC01)*	1/set
Surgical Retainer (Large) (CWKSR-L)*	1/set
Button Tails (for post-operative care)	40/set
ABRA Abdominal Wall Closure Set Extension	CWK-EX
PACK { 50 cm Silicone Elastomer (1/pack) Button Anchors (2/pack) Button Tails (2/pack)	3 packs/set
Surgical Retainer (Small) (CWKSR-S)*	1/set
ABRA Abdominal Wall Closure Set Extension	CWK-H
PACK { 50 cm Silicone Elastomer (1/pack) Button Anchors (2/pack) Button Tails (2/pack)	3 packs/set
Cannulator (SWC01)*	1/set
ABRA Abdominal Wall Closure Set, 3pack	CWK-3
PACK { 50 cm Silicone Elastomer (1/pack) Button Anchors (2/pack) Button Tails (2/pack)	3 packs/set

Additional kits listed, available on website

A Dynamic Tissue Systems® Solution

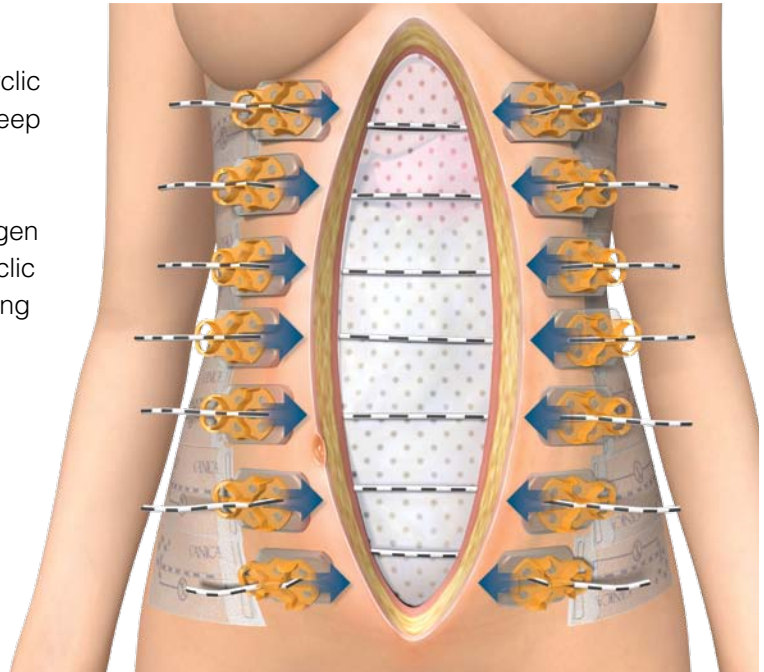
Open wounds impose serious clinical consequences

Dynamic Action

Gentle, unrelenting dynamic appositional forces (cyclic stretching) counters the retracting forces that keep wounds open.

How? Cyclic stretching of tissue facilitates collagen fiber rotation, increasing skin coverage. Chronic cyclic stretching leads to constructive remodeling including tissue generation and adaptation.²

Unlike static devices, dynamic therapeutic tension rapidly addresses the challenge of the retracted, stable wound. Therapeutic tension addresses the inertia required to return wound edges back to their original position for delayed primary closure.



Dynamic Wound
Closure

Retraction
Prevention

Tissue Support
and Expansion

1. Cinelli SM, Casey MJ, Kuhls DA, Browder TD, Coates JE, Fildes JJ. Early Primary Closure of Open Abdominal Wounds Using the Abdominal Reapproximation Anchor (ABRA®) System. University of Nevada School of Medicine, Division of Trauma and Critical Care, University Medical Center of Southern Nevada, Las Vegas, NV. Poster session presented at the Southwestern Surgical Congress, Coronado, CA; March, 2009.
2. Johnson, TM, Lowe, L, Brown, MD, Sullivan, MJ, & Nelson, BR. Histology and physiology of tissue expansion. The Journal of dermatologic surgery and oncology. 1993; 19(12):1074-1078.

Southmedic

Dynamic Tissue Systems

Respiratory

Surgical

Blades & Scalpels

Southmedic Inc.,
50 Alliance Blvd.,
Barrie, ON
Canada L4M 5K3

1-800-463-7146 Toll free in North America
705-726-9383
contactus@southmedic.com
www.dynamictissuesystems.com