

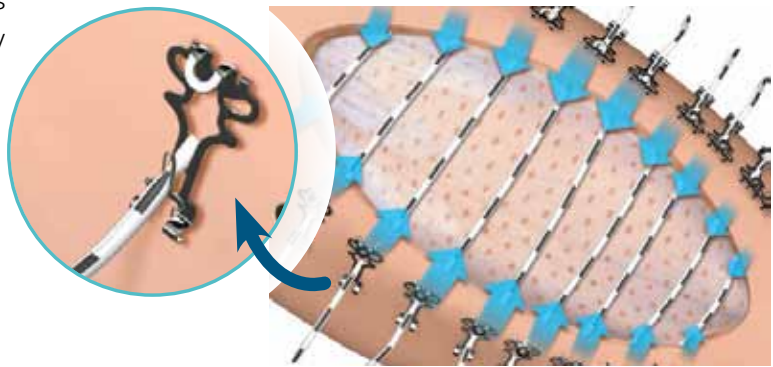
ABRA[®] Surgical

An open wound means higher healthcare costs

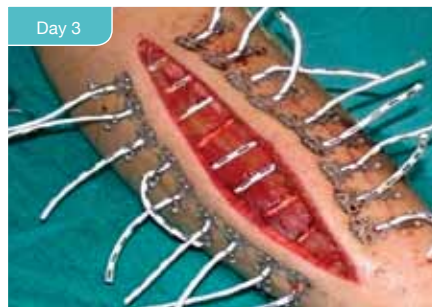
Subcutaneous Traction for Open Wounds

ABRA Surgical closes retracted skin defects through chronic cyclic tension. A sound primary closure replaces skin grafting and the associated rehabilitation, pain, and loss of function.

ABRA Surgical is indicated for use in preventing, controlling, reducing, and closing retracted soft tissue defects.



Results at a Glance*



ABRA[®] Surgical works subcutaneously for added traction, as used for this fasciotomy.

CWK02A ABRA Surgical Skin Closure Set

PACK	10 packs/set
1. Skin Anchors (2/pack)	
2. 50 cm Silicone Elastomer (1/pack)	
Loop Cannulator (SWC02)**	2/set
Lancets	3/set

** Can be purchased separately

* This case contains the opinions of and personal techniques practiced by the treating physician. The techniques presented herein are for informational purposes only. The decision of which techniques to use in a particular clinical application lies with the physician based on patient profile, particular circumstances surrounding the procedure, and previous clinical experiences.

A Dynamic Tissue Systems® Solution

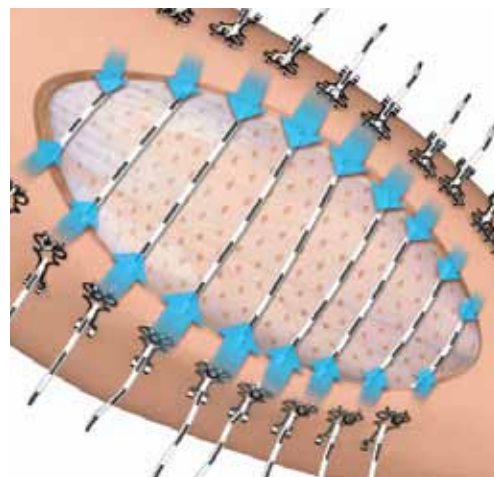
Open wounds impose serious clinical consequences

Dynamic Action

Gentle, unrelenting dynamic appositional forces (cyclic stretching) counters the retracting forces that keep wounds open.

How? Cyclic stretching of tissue facilitates collagen fiber rotation, increasing skin coverage.¹ Chronic cyclic stretching leads to constructive remodeling including tissue generation and adaptation.

Unlike static devices, dynamic therapeutic tension rapidly addresses the challenge of the retracted, stable wound. Therapeutic tension addresses the inertia required to return wound edges back to their original position for delayed primary closure.



Retracted Wounds

Open wounds retract laterally due to the inherent mechanical properties of tissue, increasing the degree of difficulty and time to definitive closure. A long-standing retracted open wound is not necessarily a permanent defect.

ABRA Surgical can return tissue back to its closed system state with normal functional tension.

Dynamic Wound
Closure

Retraction
Prevention

Tissue Support
and Expansion

1. Johnson, TM, Lowe, L, Brown, MD, Sullivan, MJ, & Nelson, BR. Histology and physiology of tissue expansion. The Journal of dermatologic surgery and oncology. 1993; 19(12):1074-1078.



Dynamic Tissue Systems
Respiratory
Surgical
Blades & Scalpels

Southmedic Inc.,
50 Alliance Blvd.,
Barrie, ON
Canada L4M 5K3

www.dynamictissuesystems.com
705-726-9383
1-800-463-7146 Toll free in North America
contactus@southmedic.com